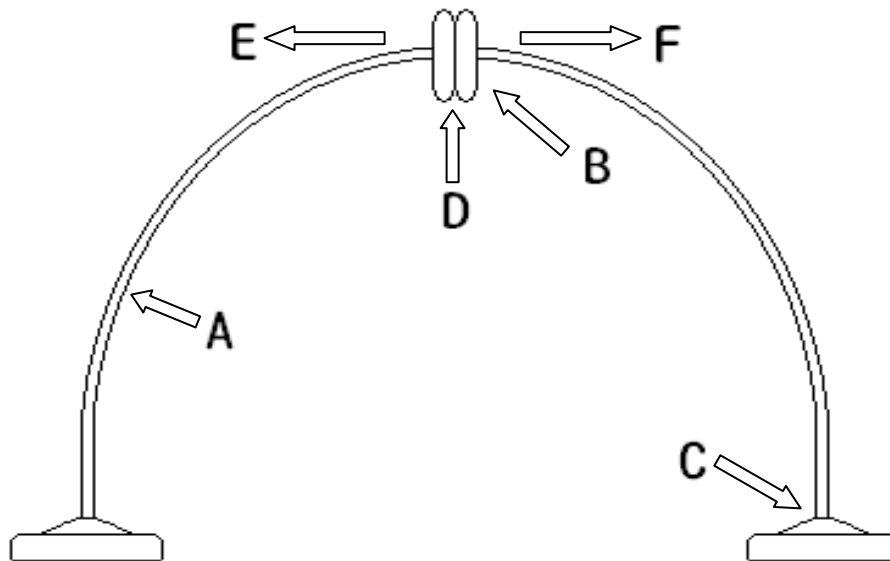


Full-Joy Color Arch Assembly Instructions



1. Firstly, link inner tube of every section on arch [Figure A] (if for long-term layout, be sure to tape around the inner tube sealing area), then pass through the middle of arch garland [Figure B], and plug two ends of the inner tube on the base screw [Figure C].
2. Place arch garland in the center of arch inner tube [Figure D], then separate garland into 1/2 (garland can be easily recognized in the center). Firstly, place lightly toward the direction of [Figure E], garland will hang naturally and carry out (do not pull), then place lightly toward the direction of [Figure F], garland is wait to be carried out to completely set up.
3. After assembling, gently shake arch inner tube to carry out a more natural appearance of garland to significantly show the beauty.
4. If a longer length of garland is needed or accidentally torn at sealing area while assembling, double-sided adhesive tape or staples binding can be used.

Note: Be sure to fix the top of arch to avoid danger.
Recommend a full set of matching; Dedicated used for Full-Joy arch inner tube and base.